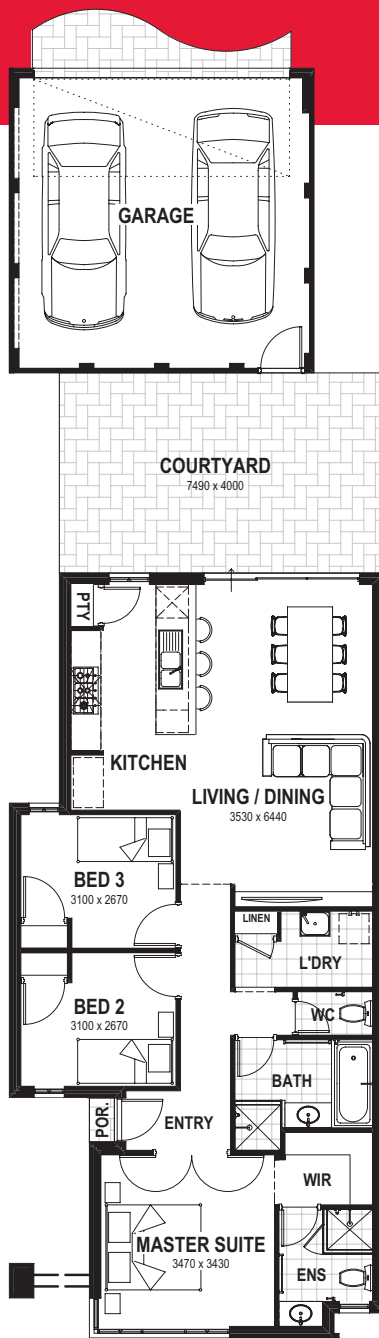




The Moscow



Features include:

- » Architecturally designed elevation with feature contrasting rendered pier and brickwork to front
- » Double lock-up garage with remote sectional door
- » Gourmet kitchen with large pantry, fridge/freezer recess and ample bench space
- » Open plan living area leading onto fully paved courtyard
- » Master suite with large walk-in robe and fully appointed ensuite

TOTAL HOME AREA
139.06m²

» Get started with just
\$3,000
PLUS receive \$10k
First Home Owner's Grant*

» FIRST HOME OWNERSHIP made *easy* and affordable.

Easystart Homes is WA's first home owner specialist.



We understand that buying a first home can be exciting as well as challenging. That's why, as WA's first home owner specialist, we're here to help you every step of the way. From finding the best possible home loan, securing the ideal location, to designing the home of your dreams, we take care of everything.

1 » Finance

- We ensure you receive all eligible government-assisted finance, including the \$10,000 first home owners grant
- We also offer competitive home loans, low deposits and expert financial advice

2 » Land

- We have access to superb blocks before they hit the market
- We offer exclusive House & Land packages North & South of the river - including the beautiful South West - with great inclusions

3 » Home

- Choose from over 30 amazing home designs
- We can tailor House & Land packages to suit your lifestyle and budget
- Our high-quality Easy Range specification is above industry standard

QUALITY WITHOUT COMPROMISE

Easystart prides itself on: **Building Excellence**, **Quality Construction** and **Exceptional Customer Service**. Proudly part of the Summit Homes Group, our 35 years of experience offers you premium-quality finishes and inclusions, plus an exceptional commitment to looking after you every step of the way.

Perth Metro
(08) 9333 0833

Bunbury
(08) 9722 0399

Busselton
(08) 9753 7891



easystart
homes

easystarthomes.com.au

*Terms and conditions apply. Images for illustrative purposes only. Builder's Registration No: 10689